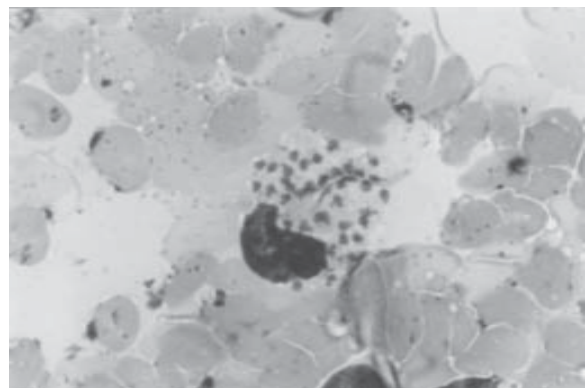
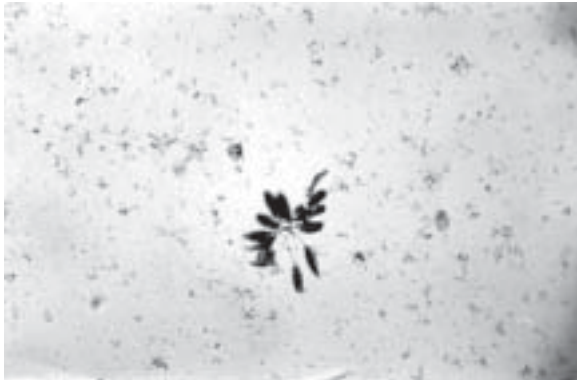


IMAGES IN CLINICAL MEDICINE



Cutaneous Leishmaniasis:

Still a common disease in both rural and urban areas of Pakistan. It can cause disfiguring scars. Diagnosis is made by demonstrating LD bodies in Giemsa stained smears from the skin.

Saifullah Khan

B.Pharmacy; M.Phil (Pb)
Faculty of Pharmacy
Gomal University, DI Khan